

EXTRA 2 FUNCTION LINE

Corner notching / underside machining on 5-axis machines in tight spaces without board

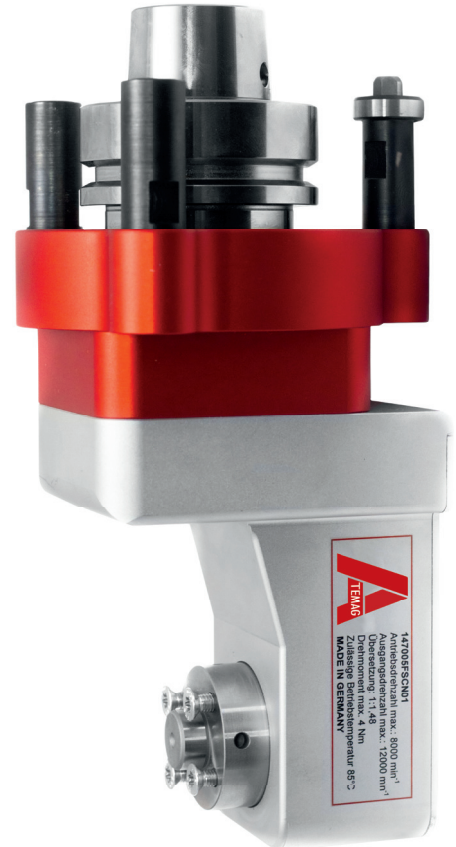
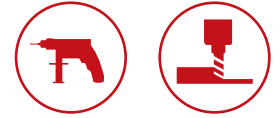
Machining capabilities: Drilling and routing

Typical applications:

- Windows: Underside routing of sealing grooves
- Doors: Underside drilling (standard and concealed hinges), notching of internal corners
- Furniture making and kitchens: Concealed hinge cup hole drilling / routing for hinges
- ...

Technical Specifications

Max. input speed:	8,000 rpm
Max. output speed:	12,100 rpm
Gear ratio:	1 : 1.48
Max. torque:	4 Nm
Permissible operating temperature:	max. 85°C
Positioning of torque arm with respect to tool:	4 x 90°
Machining angle:	90°
Number of tool outputs:	1 / fixed
Lubrication:	Grease / Lifetime lubrication



Tool connection

- Spindle for corner notching tool
- ER32
- ER 20 internal
- Other connections on request



Machine connection:

ATEMAG aggregates are used on all CNC machines and robot systems. The machine connection is precisely matched to the technical requirements of the CNC machine or robot.

