

SOFT GRINDER SMART LINE

Eccentric sander for sanding or polishing work on CNC machines or robots on surfaces and edges – also suitable for free-form surfaces.

Machining capabilities:

- Sanding of edges and surfaces – rough, intermediate, and finish sanding ...
- Grinding at an angle (miters), e.g., Swiss edge
- Polishing of various materials, e.g., Corian
- ...

Materials: Veneered boards, solid wood, MDF, mineral materials, etc.

Technical Specifications

Max. input speed:	12,000 rpm
Max. output speed:	12,000 rpm
Gear ratio:	1:1
Permissible operating temperature:	85°C
Machining angle:	0°
Number of tool outputs:	1 / fixed
Max. floating capacity:	4 mm
Probing force:	1.2 - 2.4 kg
Eccentric stroke:	5



The SOFT GRINDER SMART LINE can be clamped in all angular aggregates units with ER 32 or ER 25 collet chuck interfaces.



Tool connection:

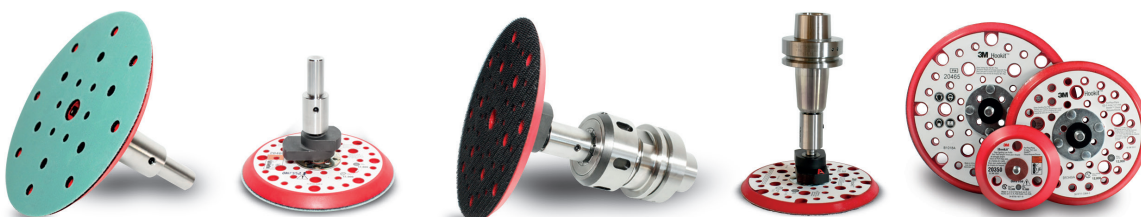
The sanding discs are available with diameters of

- $\varnothing 76$ mm
- $\varnothing 125$ mm
- $\varnothing 150$ mm and can be exchanged.



Machine connection:

The eccentric sanding unit is simply clamped into an existing tool holder or a CNC aggregate.



Angebotsanfrage:

