



SOFT TOUCH ONE FUNCTION LINE

Floating aggregate for constant and defined machining depth despite clamping unevenness and thickness fluctuations

Typical applications:

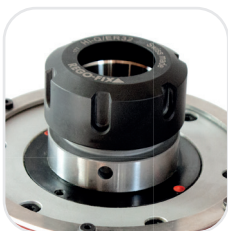
- Facade installation: Routing of V-grooves in ALUCOBOND
- Stairs: Edge machining of stair treads
- Doors: Decorative grooves
- Kitchens: Routing of recesses in countertops
- Formwork installation: Drilling at a defined depth
- Automotive and aerospace: Edge machining of molded parts and countersinking

Technical Specifications

Max. input speed:	18,000 rpm
Max. output speed:	18,000 rpm
Gear ratio:	1 : 1
Max. torque:	10 Nm
Permissible operating temperature:	max. 85°C
Machining angle:	0°
Number of tool outputs:	1 / fixed
Lubrication:	Grease / Lifetime lubrication
Floating capacity:	10 mm
Adjustment range:	70 mm
Setting precision:	0.01 mm
Probing direction:	Axial



Routing – Drilling – Sawing (horiz.) – Grinding for standard applications



Tool connections:

- ER 32
- Other connections on request



Machine connection:

ATEMAG aggregates are used on all CNC machines and robot systems. The machine connection is precisely matched to the technical requirements of the CNC machine or robot.

